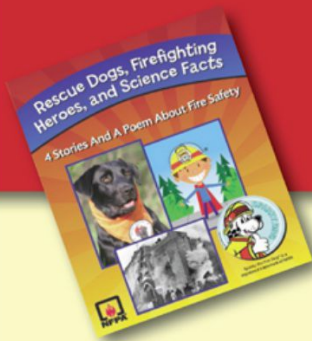


Fire Safety Math



Sparky® and Sparky the Fire Dog® are registered trademarks of the National Fire Protection Association.



WE are TEACHERS

Page Notes PDF

Alarm Count

Count the number of rooms and levels in each house. How many smoke alarms need to be installed in all three houses?



Next



Factoring

Factors are numbers you can multiply together to get a number. For example the factors of 6 are 1, 2, 3, and 6.

6

$$1 \times 6 \quad 2 \times 3$$

Example 16 factors are 1, 2, 4, 8, 16

16

$$1 \times 16$$

$$2 \times 8$$

$$2 \times 2 \times 4$$

$$4 \times 4$$

?

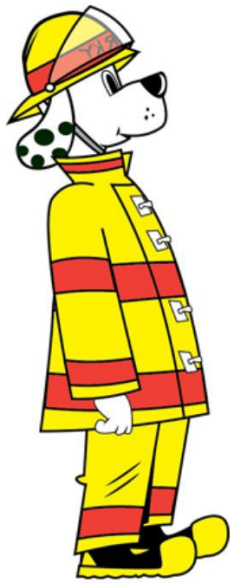
?

?



Average Escape

Three families in your community practiced their home fire escape drill two times this year. Find the average amount of time it took each family to do their drill.

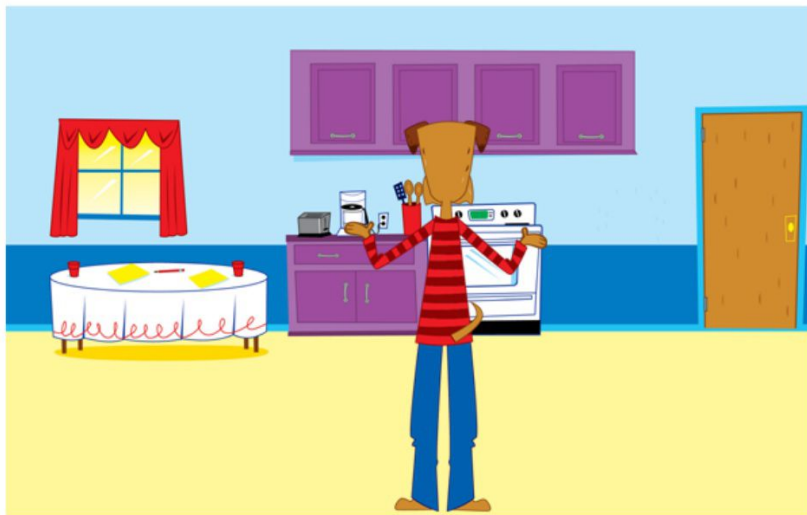


Answer



The Best Way Out


Use the *Ruler Tool* to measure the distance from the tip of Terry's tail to the door knob and center of the window in each room.







Next



Smoke Alarm Pictograph

KEY
Each  = 4 smoke alarms

Location	Number of Alarms
West Street	
Main Street	
Sunny Drive	
Park Road	



Credits

