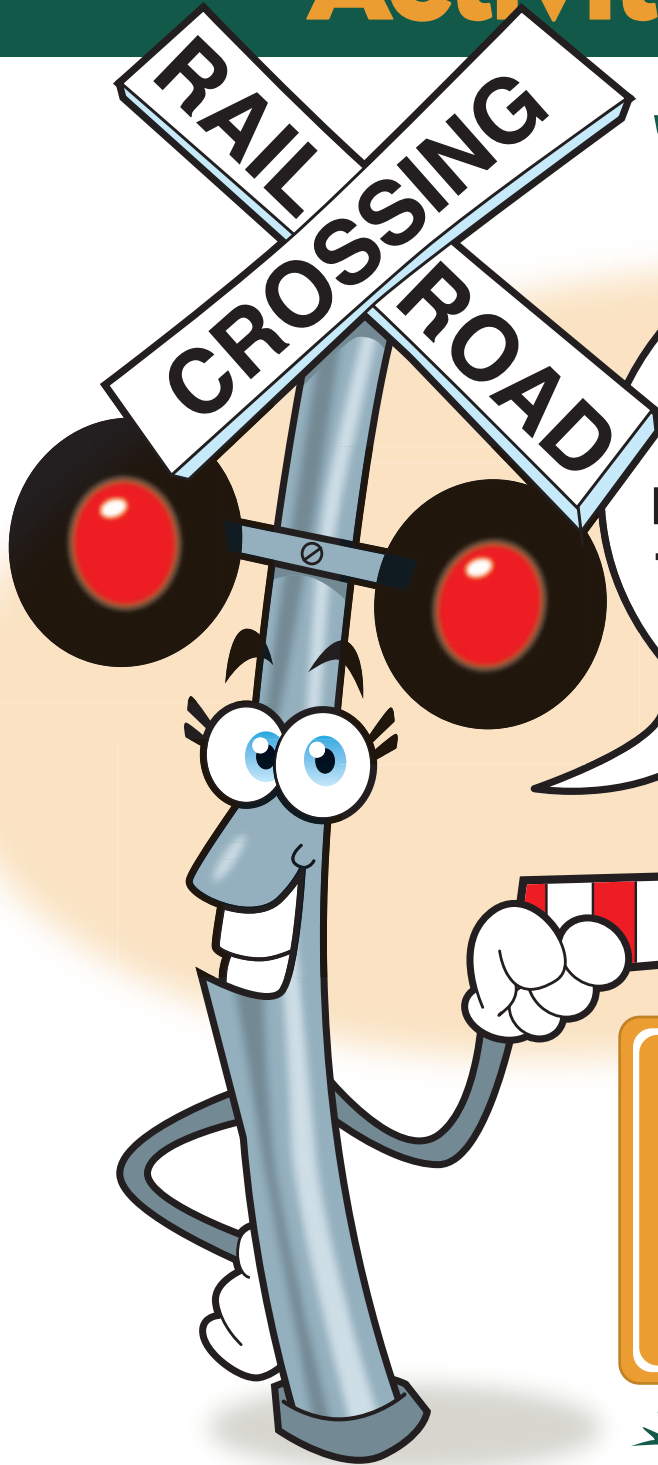


SMART Safety

Activity Book

with **Crissy Crossbuck**



Hi, I'm
Crissy Crossbuck!
This special booklet will
help you to learn how to
be safe around the railroad
tracks in your community.
**Remember - this is now
an active railroad!**

Crissy's Three Track SMART Rules

1. TRACKS ARE FOR TRAINS not for games
2. NEVER TAKE A SHORTCUT across the tracks
3. ONLY cross the tracks at a RAILROAD CROSSING sign

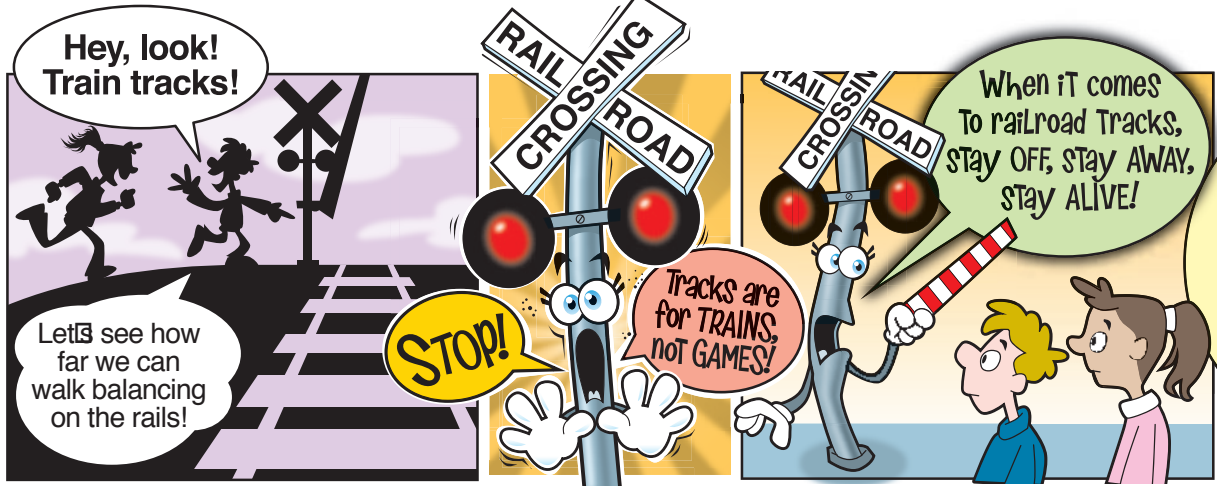
Safety-**M**inded **A**round **R**ails and **T**rains

BROUGHT TO YOU BY:



IN PARTNERSHIP WITH:





The SMART train is coming to town!
 Freight trains are running now, and SMART will start testing fast, quiet, passenger trains on the tracks soon!

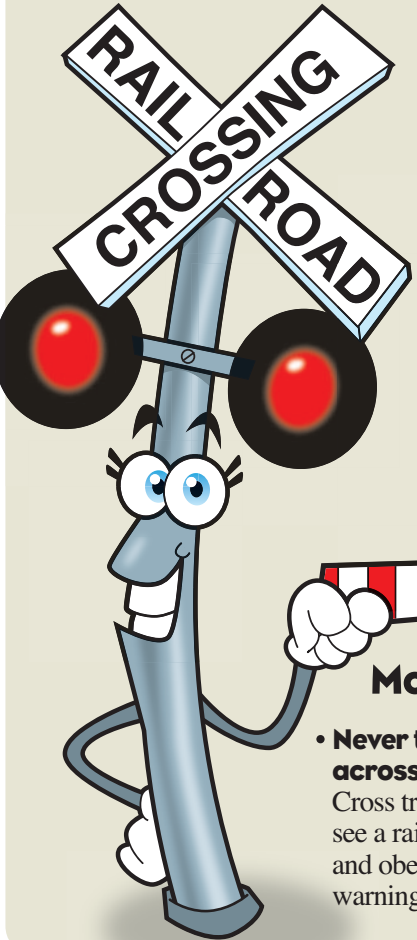
Safety-Minded Around Rails and Trains

Train Your Brain

Use the code to complete this important safety rule.

_____ walk, _____, or _____ on or
 _____ the tracks □ it is dangerous and _____
 the _____.
 _____ are for _____ only!

- = AGAINST
- ▲ = TRACKS
- ▼ = PLAY
- = BIKE
- = NEAR
- ▲ = LAW
- = TRAINS
- = NEVER



More Ways to be Track SMART:

- **Never take a shortcut across the tracks!**
 Cross tracks only where you see a railroad crossing sign, and obey all signs, gates and warning signals.
- **Never try to race a train!** By the time the train engineer can see you and hits the brake, it is too late for the train to stop in time.

Train is A-Comin'

Replace the missing words.

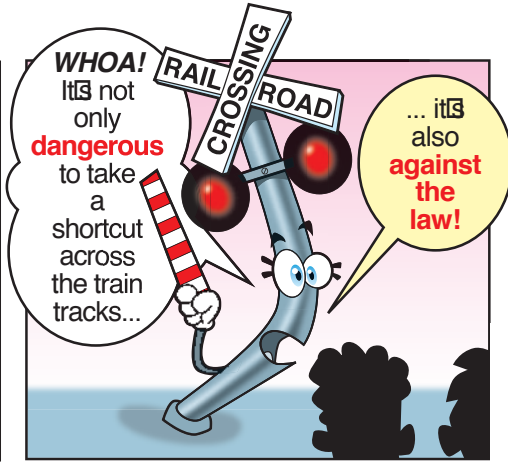
PROTECT **CROSSING** **TEST**
KIDS **SAFE**

The last passenger train ran in the North Bay in 1958 □ a generation ago! Children have grown up and even had their own _____ without learning how to be _____ around tracks and trains.

But remember, this is an ACTIVE RAILROAD!



The SMART TRAIN is coming soon. To start, there will be _____ runs of the new passenger trains on the tracks, to prepare for regular service. These new trains will have all the latest safety features including _____ gates, lights and signs to alert us to tracks and trains. But none of that can _____ someone who is playing around on the tracks!



Walking on railroad tracks is trespassing!
It's dangerous and illegal to take a shortcut across the tracks!
Be Track SMART! The only safe place to cross is at a RAILROAD CROSSING sign that looks like me!



Sign Language

Can you read the signs?



Yellow, circular advance warning sign: This sign warns drivers and pedestrians that the road crosses train tracks ahead. It tells you to pay extra attention as you approach the crossing.

Red flashing lights with bells and gates warn drivers and pedestrians when a train is approaching. A gate will go down to keep people and cars a safe distance from the tracks. It is illegal to go around the gates.



Railroad Crossing Sign: This is the place to cross the tracks, after the lights stop flashing and the gate goes up and then only after you STOP, LOOK and LISTEN to make sure another train isn't coming.

Next time you're in the car or on a walk, see how many of these railroad crossing signs you can find.



Optical Illusions

How close is that train really?

An **optical illusion** is when your eyes and your brain don't agree. It is when what you think you see isn't the way things really are.

Trains at a distance look smaller and further away than they really are. At a distance, it's even hard to tell how fast they are moving. That's why crossing only at **Railroad Crossings** is so important – lights and bells can alert you to an oncoming train and keep you safe.



At 55 miles per hour, a train travels about 81 feet EVERY SECOND!



How long does it take each vehicle to stop?

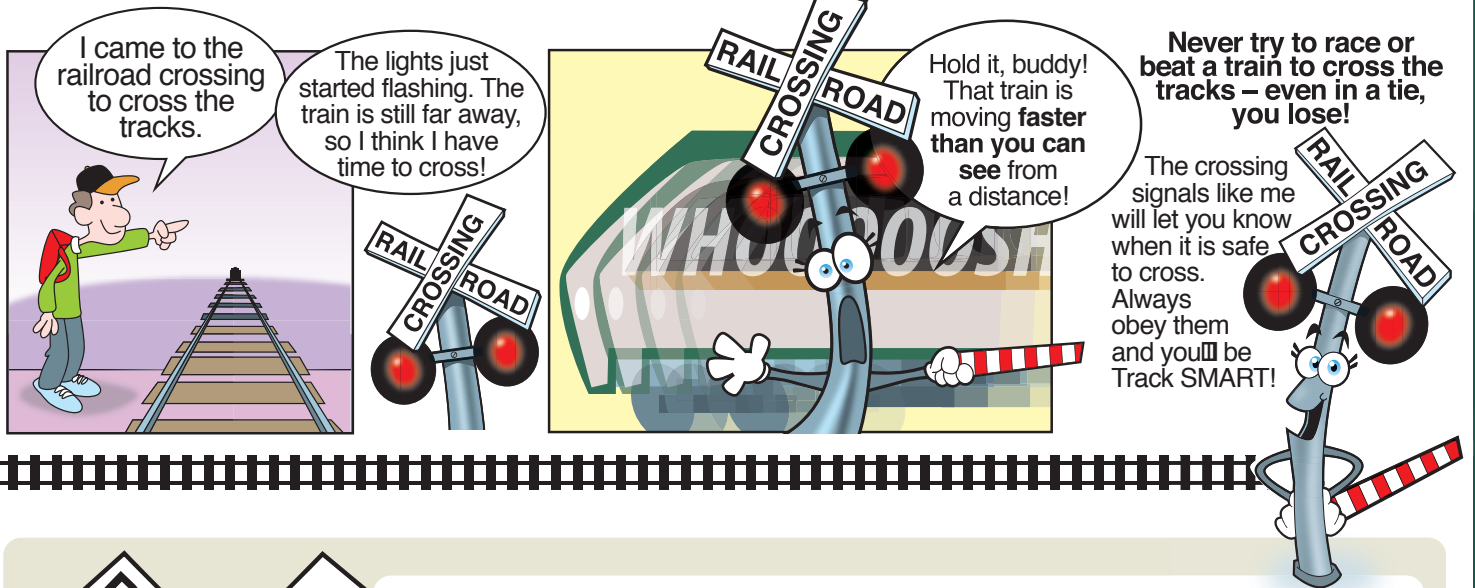
Construction of new tracks and improved crossings on the SMART rail line began in 2012 and will continue through 2014 and beyond.

After 10 years without trains, freight trains are already traveling on the North Bay rail lines again. Soon, SMART will start testing its new, fast, quiet passenger trains. Freight and test trains do not run on a schedule. The tracks are now active. And that means you should:

_LW_YS
_XP_CT
_TR_IN!
 (Replace the missing vowels)



Safety-Minded Around Rails and Trains



REQUEST A FREE RAIL SAFETY PRESENTATION!

Help build a **RAIL-SAFE COMMUNITY** by scheduling a free rail safety presentation for your class, school, neighborhood or community group.

Visit the California Operation Lifesaver website at www.caol.us and just click Request a Presentation.

SMART works with Operation Lifesaver, a national non-profit dedicated to railroad safety education.

Sonoma-Marín Area Rail Transit District (SMART)
Phone: 707-794-3330 Fax: 707-794-3037
info@sonomamarintrain.org

www.sonomamarintrain.org
5401 Old Redwood Hwy., Suite 200
Petaluma, CA 94954



Are You Track SMART?

Help your friends and family learn how to be safe at railroad crossings. Visit www.oli.org today.

