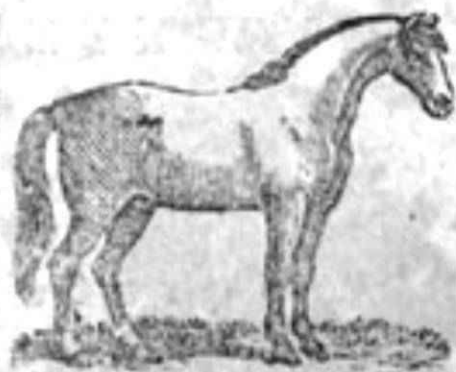


No. 6.

THE PICTURE

ALPHABET.



ERIE, PA.
OLIVER SPAFFORD.
1850.

THE PICTURE

ALPHABET

ERIE, PA.
OLIVER SPAFFORD.
1850.

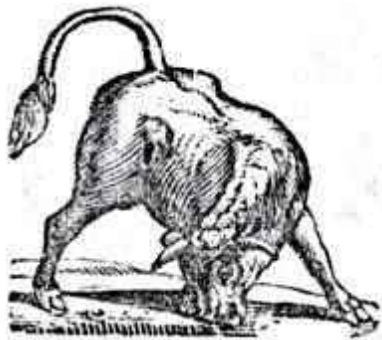


A

a

Antelope

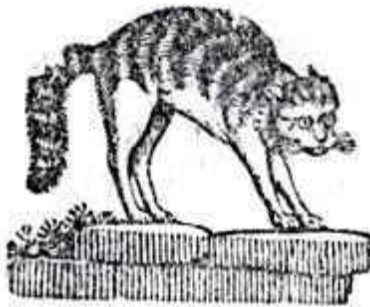
B



b

Bull

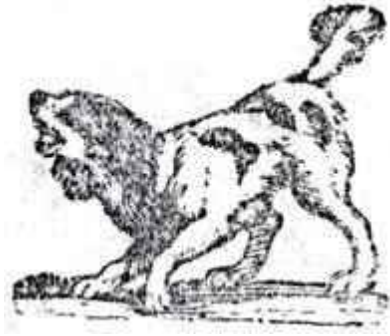
C



c

Cat

D



d

Dog

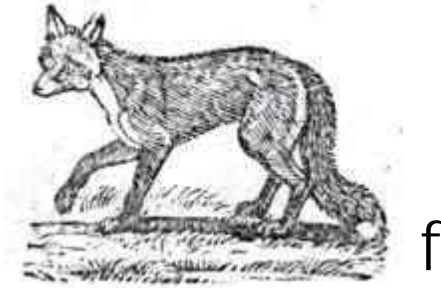
E



e

Eagle

F



f

Fox

G



g

Goat

H



h

Hawk

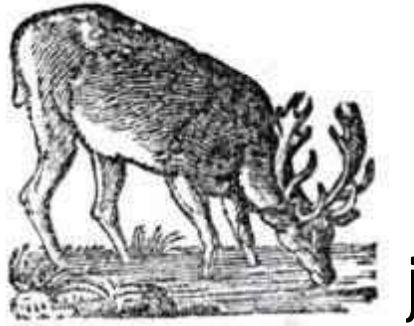
I



i

Ibex

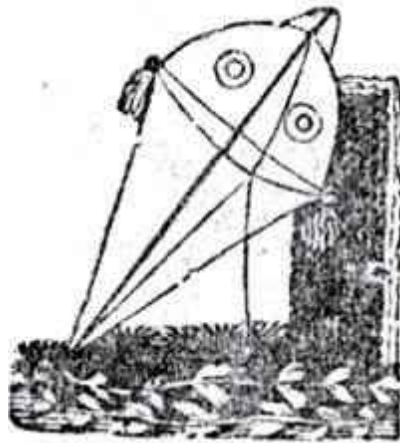
J



j

Elk

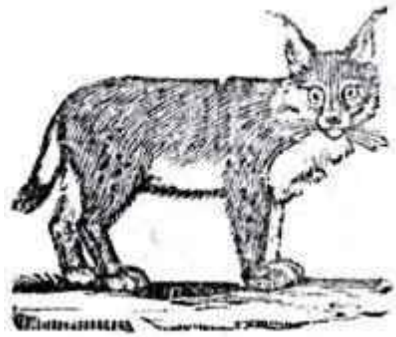
K



k

Kite

L



l

Lynx

M



m

Monkey

N



n

Nylghau

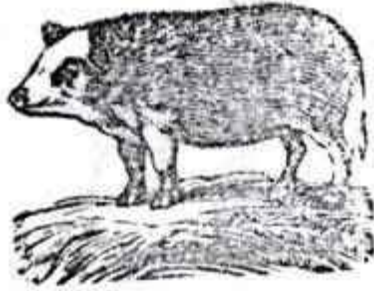
O



o

Owl

P



p

Pig

Q



q

Quail

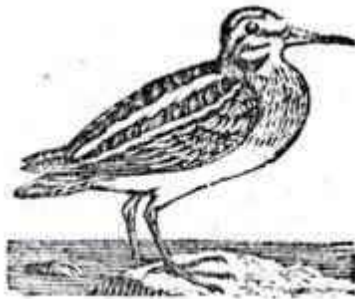
R



r

Raccoon

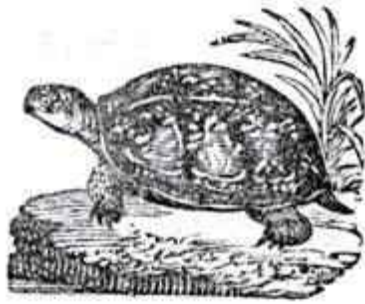
S



s

Snipe

T



t

Tortoise

U



u

Urus

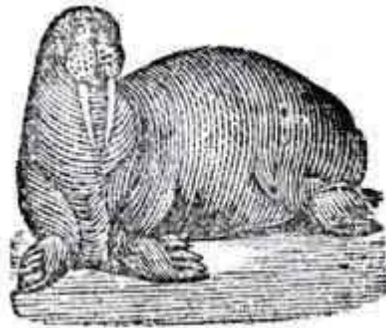
V



V

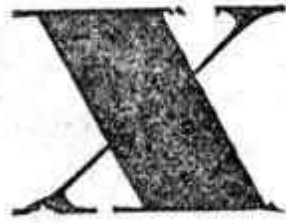
Vulture

W



W

Walrus

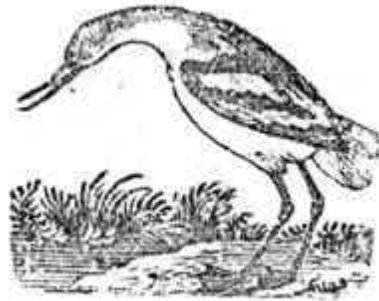


X

There is no word
in the English
language
beginning with
this letter.

x

Y



y

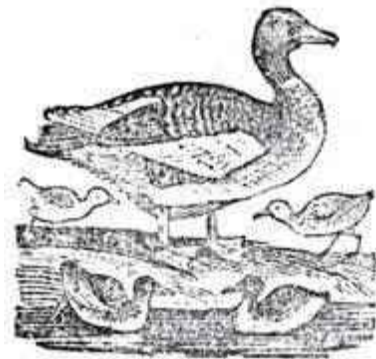
Yelper

Z



Z

Zebra



Goose and
Goslings



Bear