

ADVENTURES OF THE **G**ARBAGE **G**REMLIN



United States

RECYCLE
AND COMBAT
A LIFE OF
GRIME

Note to the Teacher

The Adventures of the Garbage Gremlin: Recycle and Combat a Life of Grime (EPA/530-SW-90-024) is part of "Recycle Today," the U.S. Environmental Protection Agency's educational program on recycling. It can be used in conjunction with *Let's Reduce and Recycle: Curriculum for Solid Waste Awareness* (EPA/530-SW-90-005) and *School Recycling Programs: A Handbook for Educators* (EPA/530-SW-90-023) to introduce students to the benefits of recycling. A poster, *Recycle Today! Ride the Wave of the Future* (EPA/530-SW-90-010), is also available to promote recycling and encourage students to get involved in recycling efforts in their schools. All of these materials can be ordered free of charge by writing OSW Publications, Office of Solid Waste, U.S. Environmental Protection Agency, 401 M Street SW, Washington, DC 20460, or by calling the Resource Conservation and Recovery Act (RCRA) Hotline at 1-800-424-9346.

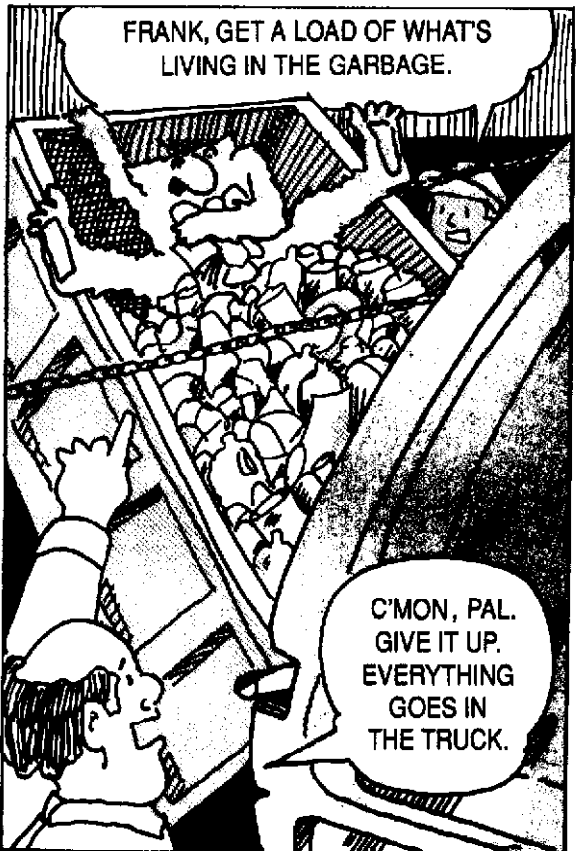
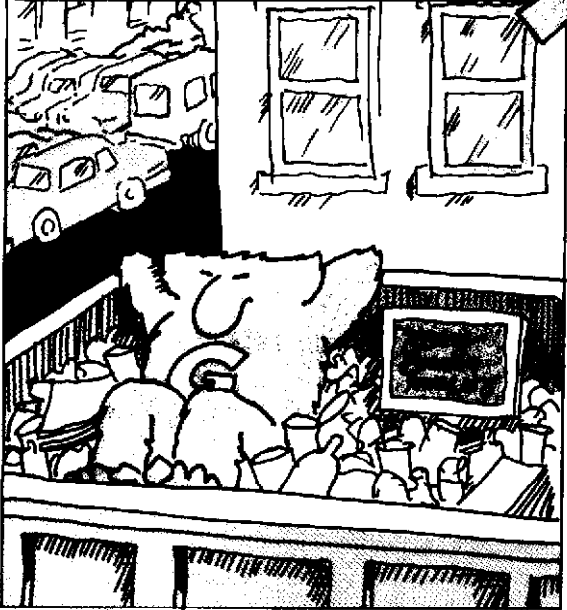
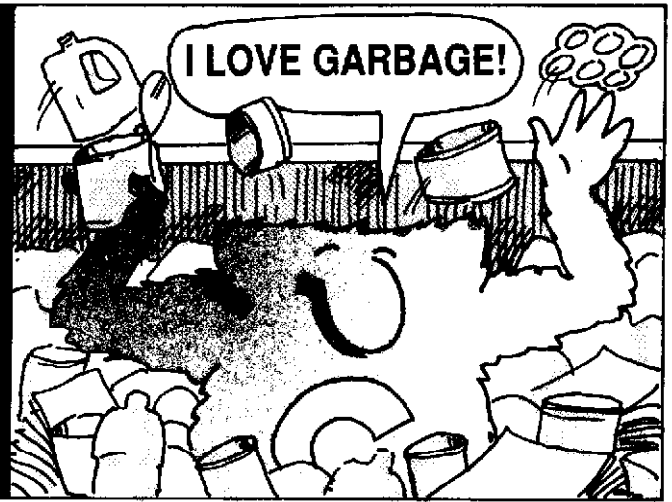
Office of Solid Waste
EPA/530-SW-90-024

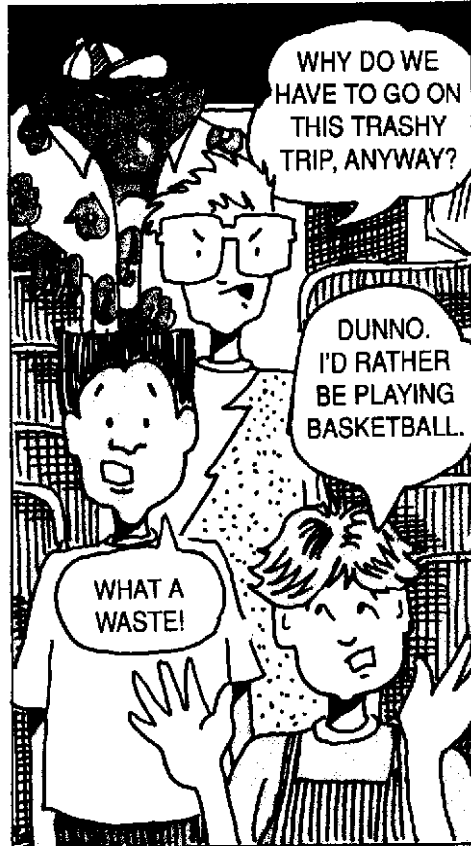
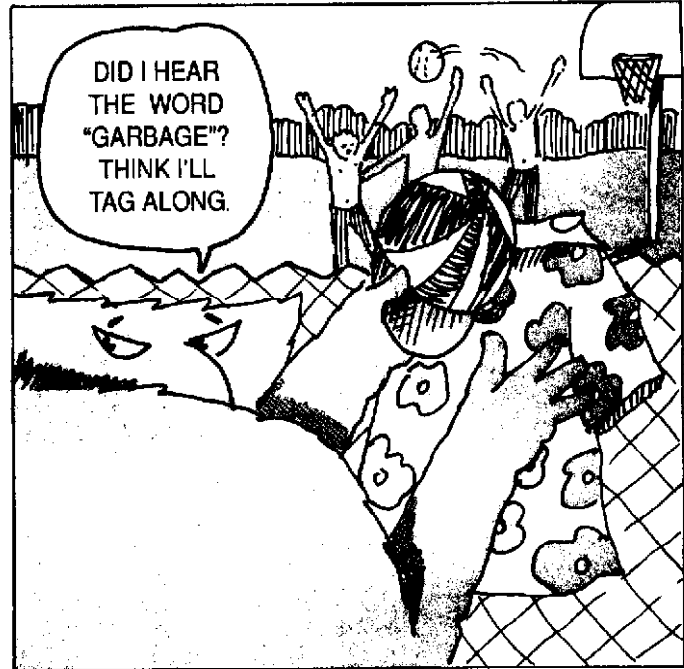
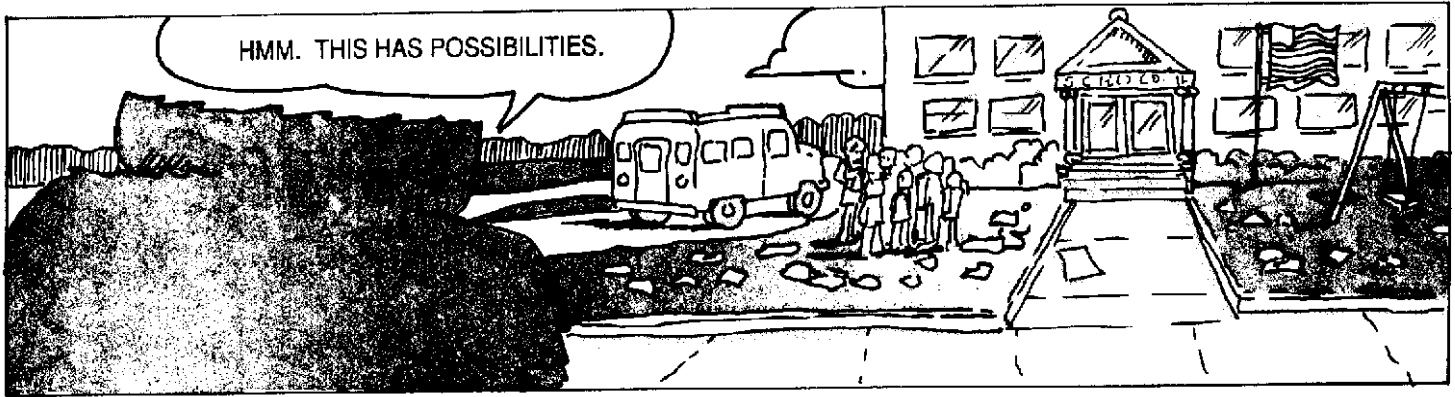
Printed on Recycled Paper

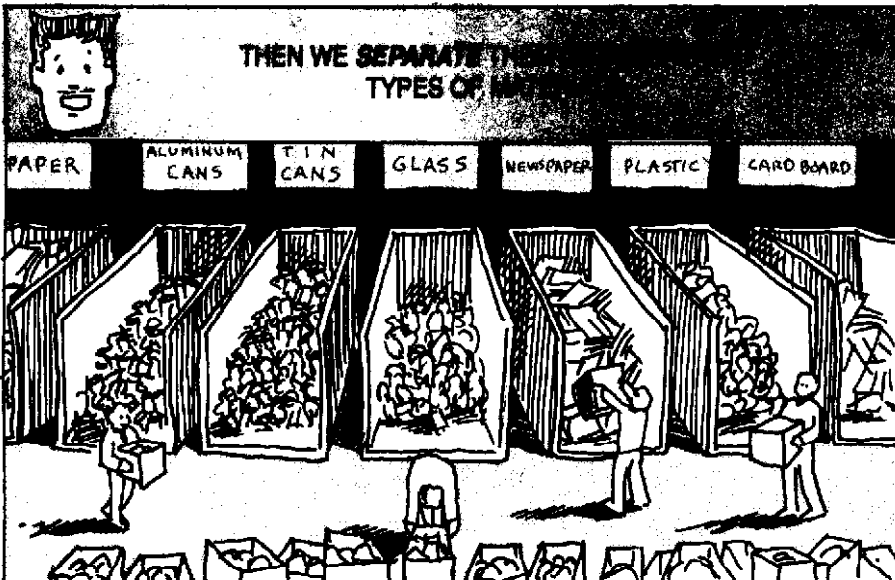
NO ONE KNOWS

WHO OR WHAT HE REALLY IS...

BUT YEARS OF LIVING OFF THE TRASH THAT OTHERS HAVE THROWN AWAY HAVE MADE HIM FAT AND LAZY...







AT THIS CENTER WE COLLECT PLASTIC MILK JUGS AND SOFT DRINK CONTAINERS, ALUMINUM CANS, TIN CANS, GLASS CONTAINERS, NEWSPAPER, CARDBOARD, AND PAPER.



OUR COMMUNITY ALSO RECYCLES LEAVES, GRASS, AND OTHER YARD WASTES BY TURNING THEM INTO COMPOST...



...WHICH CAN BE SPREAD IN FLOWER BEDS AND VEGETABLE GARDENS...



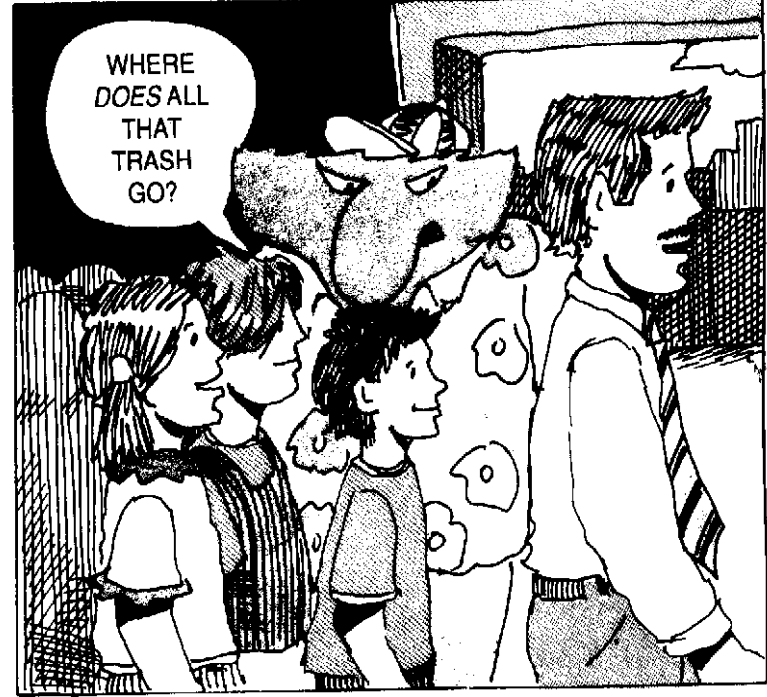
...TO HELP THE PLANTS GROW HEALTHY AND STRONG.



NOW, LET'S SEE WHAT HAPPENS TO ALL THESE RECYCLABLES!



WHERE DOES ALL THAT TRASH GO?



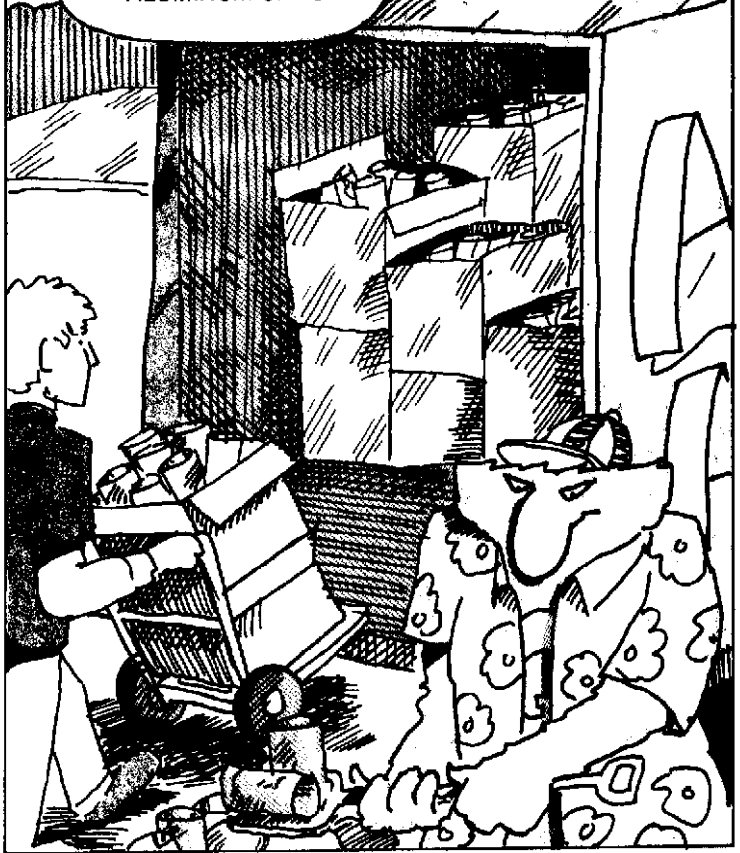
TRUCKS FROM VARIOUS COMPANIES
COME TO TAKE AWAY THE
RECYCLABLES AND MAKE THEM
INTO NEW PRODUCTS.

Reusable
NEWS
PAPER

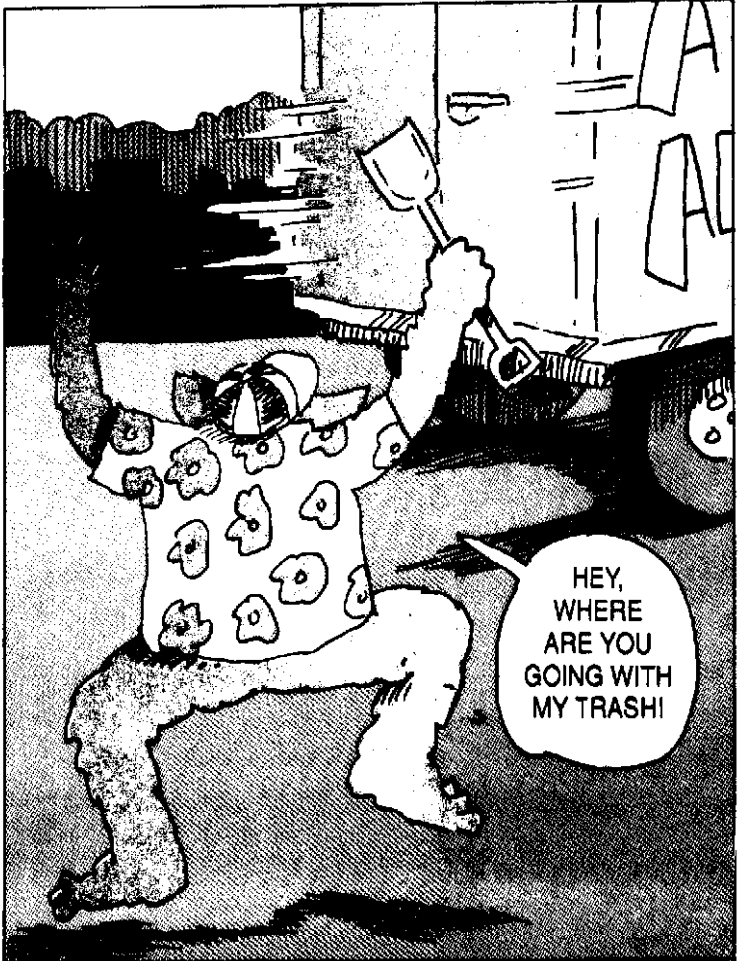
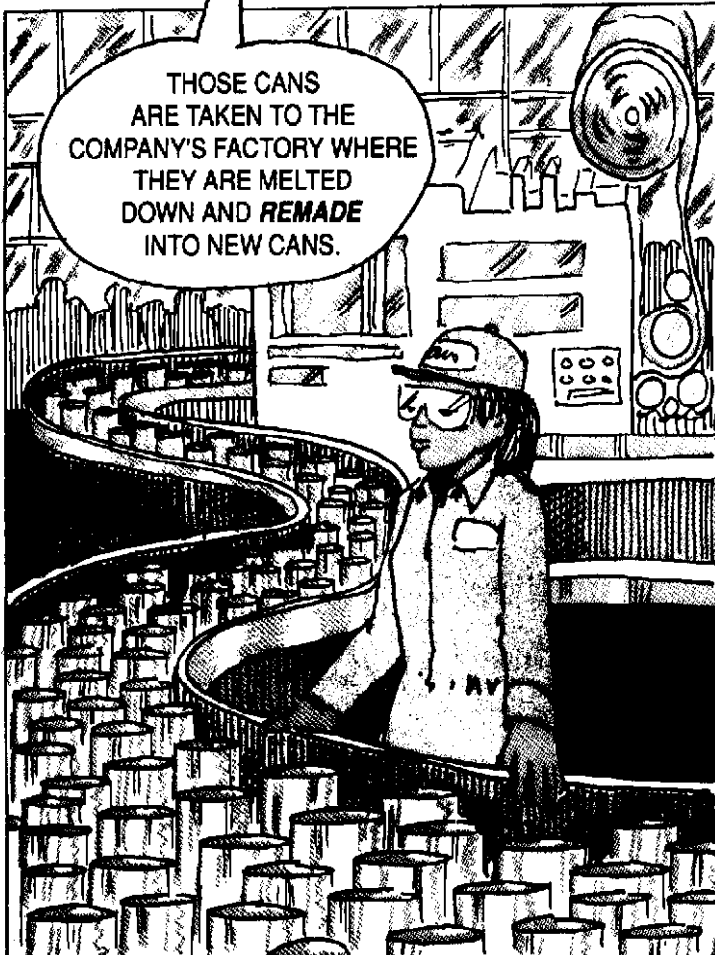
WELCOME
ALUMINUM



THERE IS THE TRUCK
TO COLLECT THE
ALUMINUM CANS.



THOSE CANS
ARE TAKEN TO THE
COMPANY'S FACTORY WHERE
THEY ARE MELTED
DOWN AND **REMADE**
INTO NEW CANS.



HEY,
WHERE
ARE YOU
GOING WITH
MY TRASH!



FINALLY, THE NEW CANS WILL BE FILLED WITH SODA AND JUICE AND **MARKETED**, OR SOLD, AT THE SUPERMARKET...
...WHERE THEY WILL BE BOUGHT AND **REUSED** JUST LIKE THIS SODA CAN.

I DON'T LIKE THE WAY GARBAGE DISAPPEARS AROUND THIS PLACE.



WHO KNOWS WHAT KIND OF MATERIAL IS RECYCLED THE MOST?

GLASS BOTTLES AND JARS?



THAT'S A GOOD GUESS. ABOUT 5 BILLION GLASS CONTAINERS ARE COLLECTED FOR RECYCLING EACH YEAR. GLASS IS MELTED DOWN TO MAKE NEW GLASS CONTAINERS. BUT THERE'S SOMETHING WE COLLECT EVEN MORE OF.



IS IT PAPER?



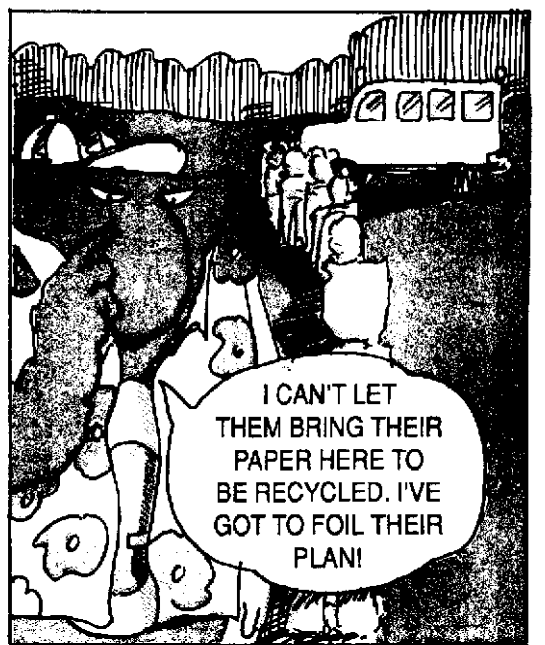
YES. ABOUT 20 PERCENT OF ALL PAPER IS NOW RECYCLED.

WOW.



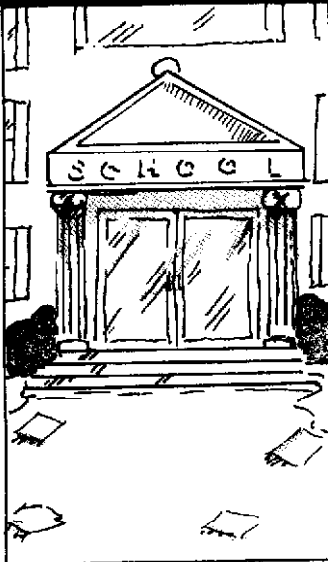
WE MUST THROW OUT TONS OF WRITING AND DRAWING PAPER AT THE SCHOOL. MAYBE WE COULD BRING IT HERE TO BE RECYCLED INSTEAD.

WE'D REALLY APPRECIATE YOUR HELP.

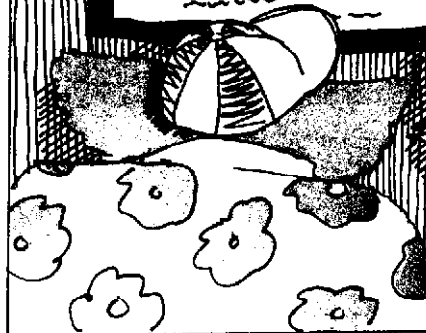


I CAN'T LET THEM BRING THEIR PAPER HERE TO BE RECYCLED. I'VE GOT TO FOIL THEIR PLAN!

BACK AT SCHOOL...

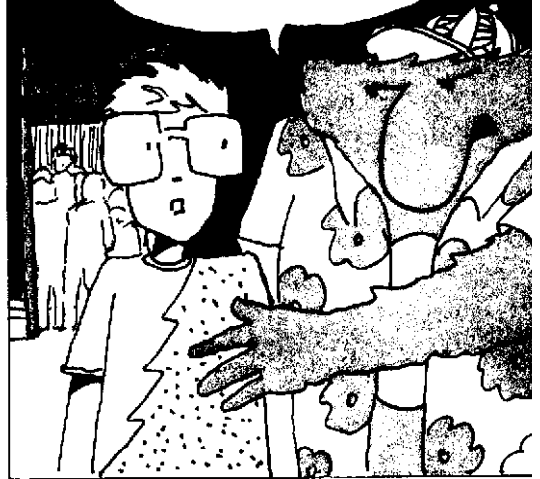


RECYCLING MEETING TODAY

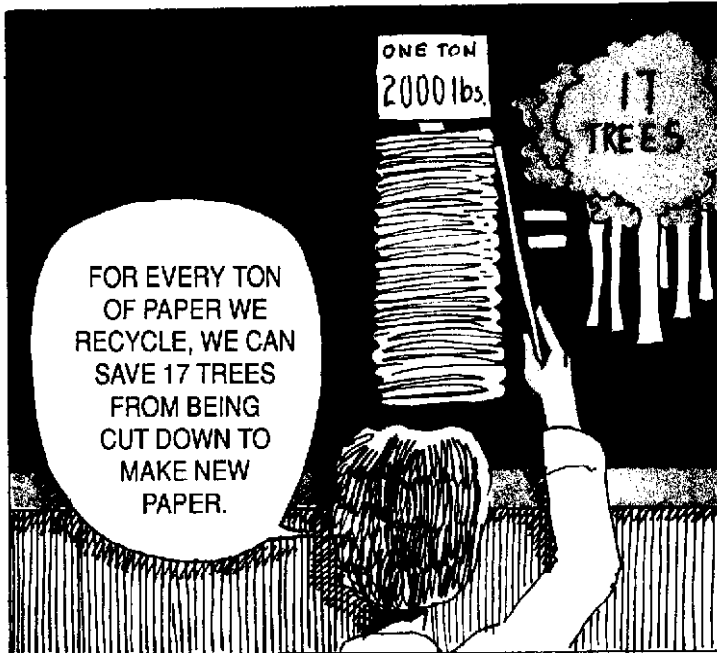


I'D BETTER CHECK THIS OUT.

HEY, YOU'RE THE KID WHO THINKS RECYCLING IS A WASTE OF TIME. WE'VE GOT SOMETHING IN COMMON. COME ON.



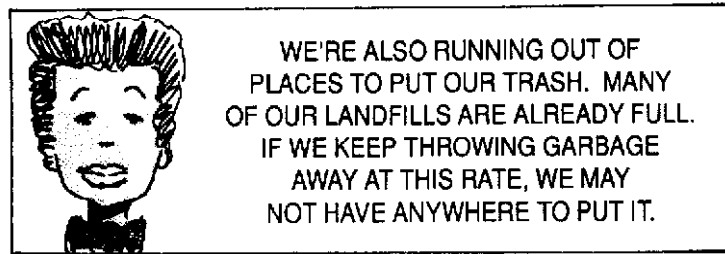
WE ARE WASTING VALUABLE MATERIALS BY THROWING THINGS AWAY THAT COULD BE USED AGAIN.



FOR EVERY TON OF PAPER WE RECYCLE, WE CAN SAVE 17 TREES FROM BEING CUT DOWN TO MAKE NEW PAPER.

ONE TON
2000 lbs.

17 TREES

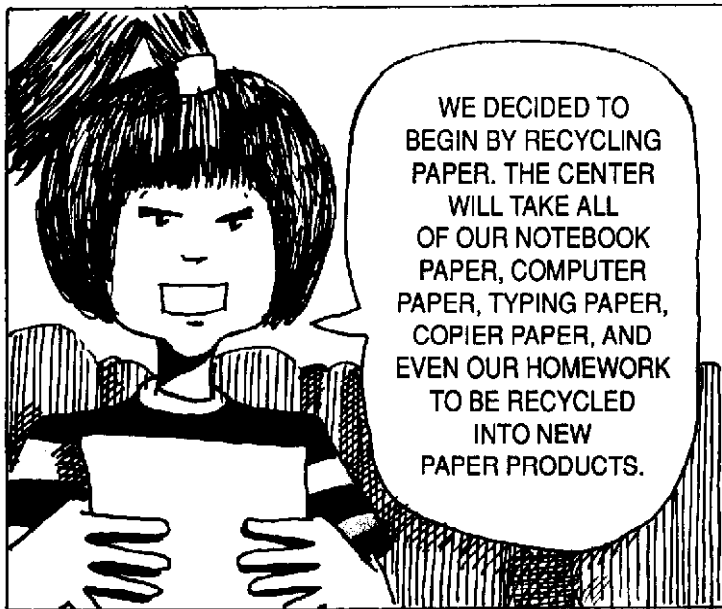


WE'RE ALSO RUNNING OUT OF PLACES TO PUT OUR TRASH. MANY OF OUR LANDFILLS ARE ALREADY FULL. IF WE KEEP THROWING GARBAGE AWAY AT THIS RATE, WE MAY NOT HAVE ANYWHERE TO PUT IT.

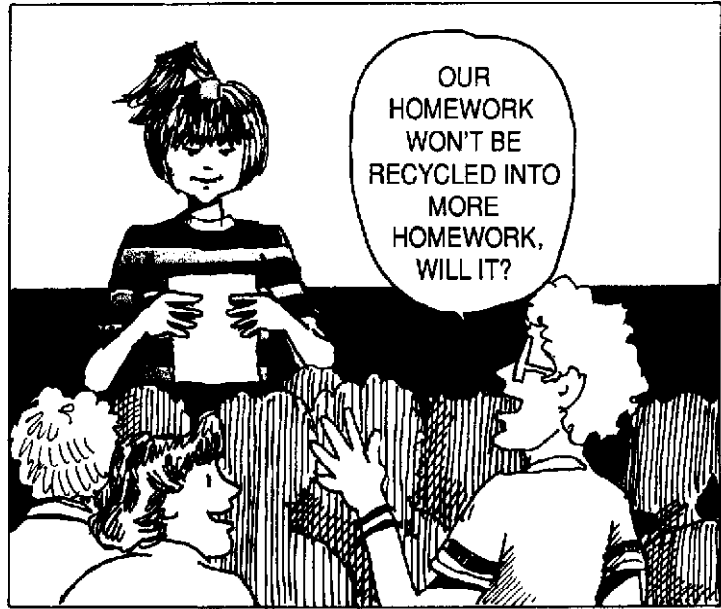


YESTERDAY, WE WENT TO A RECYCLING CENTER TO SEE HOW OUR SCHOOL COULD HELP OUT. BETSY HAS A REPORT.

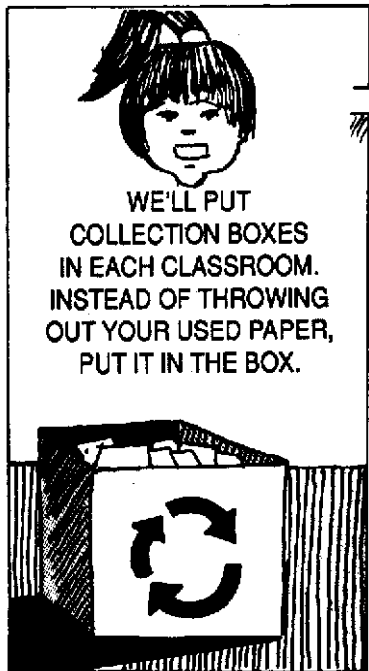




WE DECIDED TO BEGIN BY RECYCLING PAPER. THE CENTER WILL TAKE ALL OF OUR NOTEBOOK PAPER, COMPUTER PAPER, TYPING PAPER, COPIER PAPER, AND EVEN OUR HOMEWORK TO BE RECYCLED INTO NEW PAPER PRODUCTS.



OUR HOMEWORK WON'T BE RECYCLED INTO MORE HOMEWORK, WILL IT?



WE'LL PUT COLLECTION BOXES IN EACH CLASSROOM. INSTEAD OF THROWING OUT YOUR USED PAPER, PUT IT IN THE BOX.



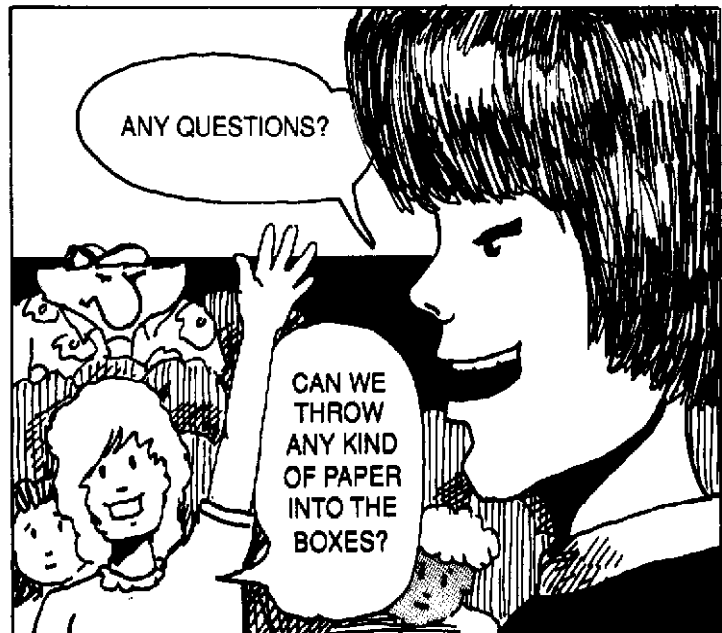
USE BOTH SIDES OF THE PAPER BEFORE RECYCLING IT. WE WANT TO WASTE AS LITTLE AS POSSIBLE!



VOLUNTEERS WILL COLLECT THE BOXES EVERY DAY AND STORE THEM IN THE AUDITORIUM.



ON FRIDAY AFTERNOONS, TEACHERS WILL HELP US BRING WHAT WE'VE COLLECTED TO THE RECYCLING CENTER.



ANY QUESTIONS?

CAN WE THROW ANY KIND OF PAPER INTO THE BOXES?



EVERYTHING EXCEPT COLORED PAPER, NEWSPAPERS, AND GLOSSY PAPER LIKE MAGAZINES. THESE CAN BE RECYCLED, BUT OUR PROGRAM WILL START WITH ONLY WHITE PAPER.

SO, IF EVERYONE WOULD TAKE A COUPLE OF THESE POSTERS ADVERTISING OUR COLLECTION...



POSTERS!
OH GOOD,
MORE
WASTE!

DON'T FORGET!
WHEN WE'RE
THROUGH
WITH THE
POSTERS,
WE'LL
RECYCLE
THEM TOO!



RECYCLE TODAY
AT
CLEAN VALLEY SCHOOL
HERE'S HOW:

- _____
- _____
- _____
- _____

USE THESE
COMMITTES



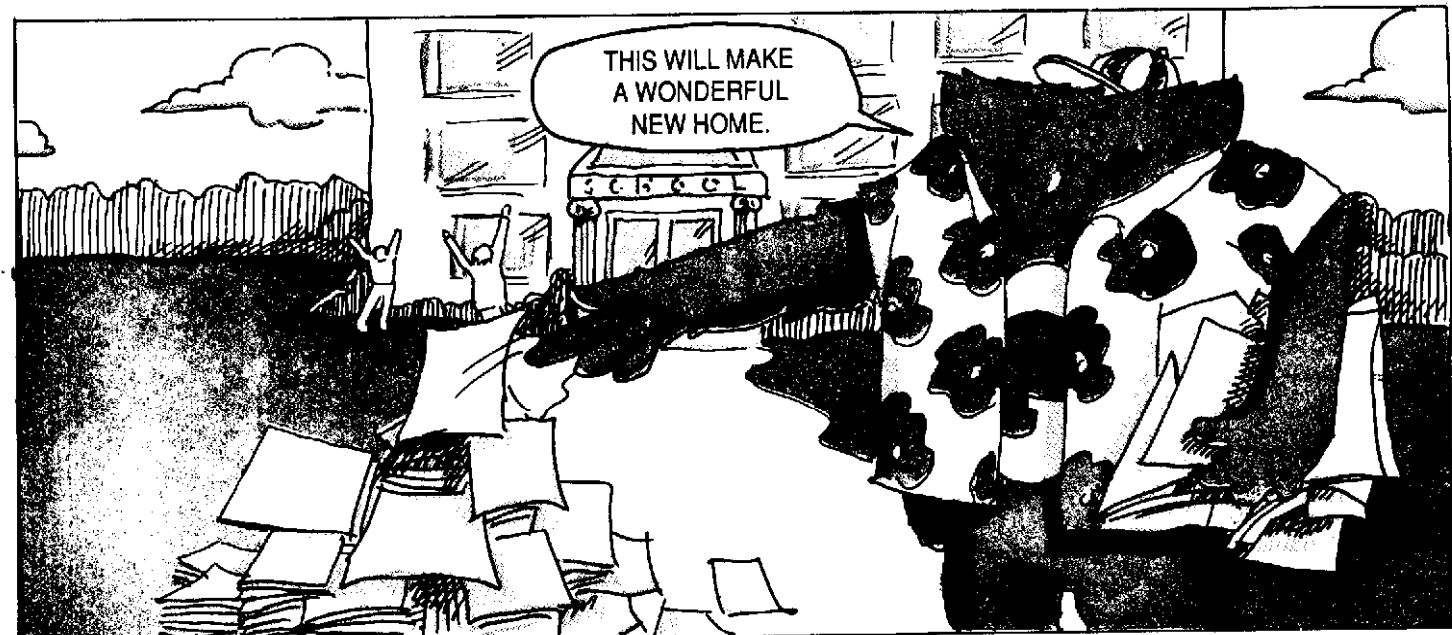
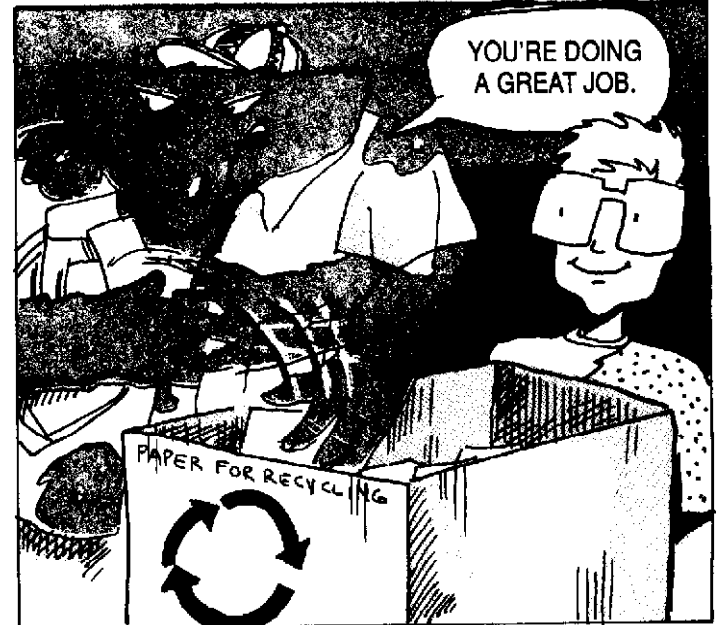
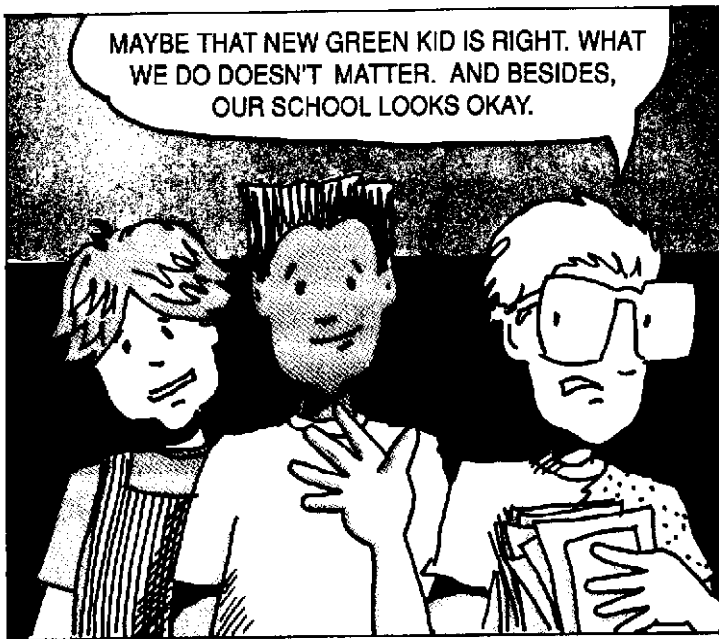
GRUMBLE,
GRUMBLE.
I'VE GOT TO
STOP THEM.

AND YOU'RE GOING
TO HELP.

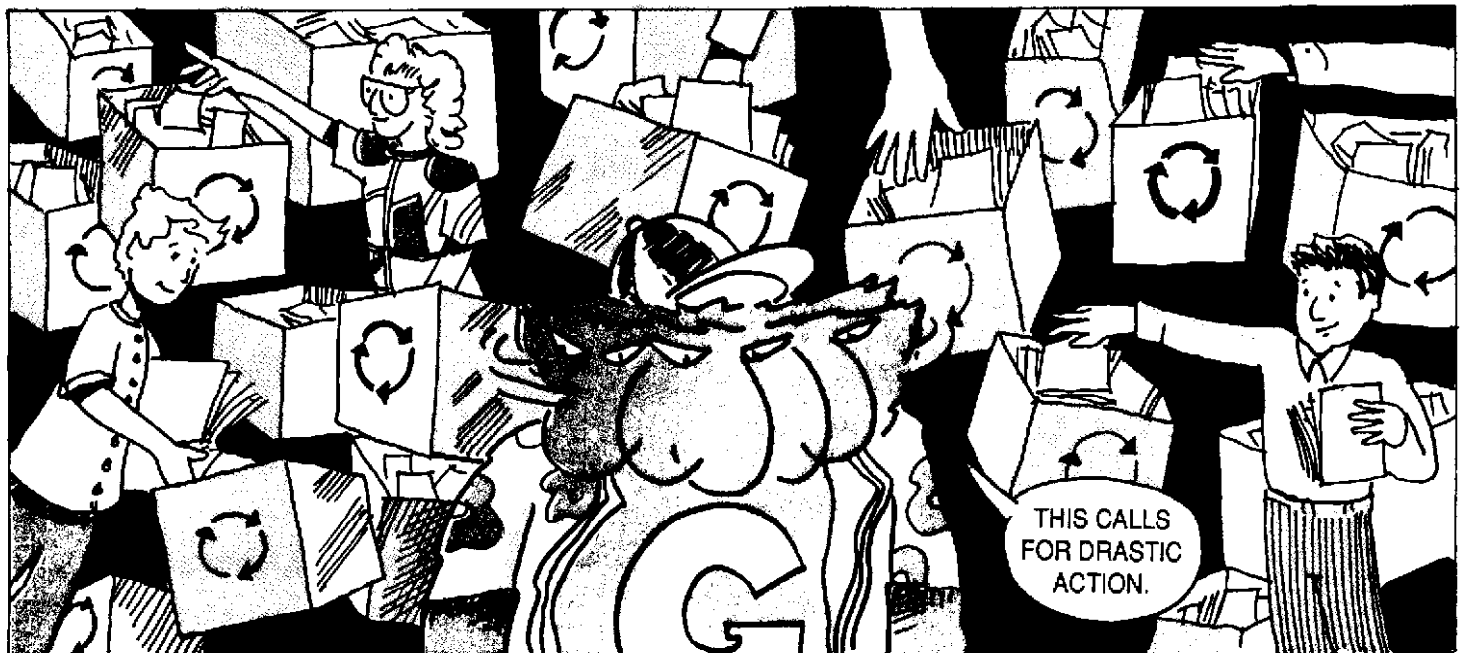
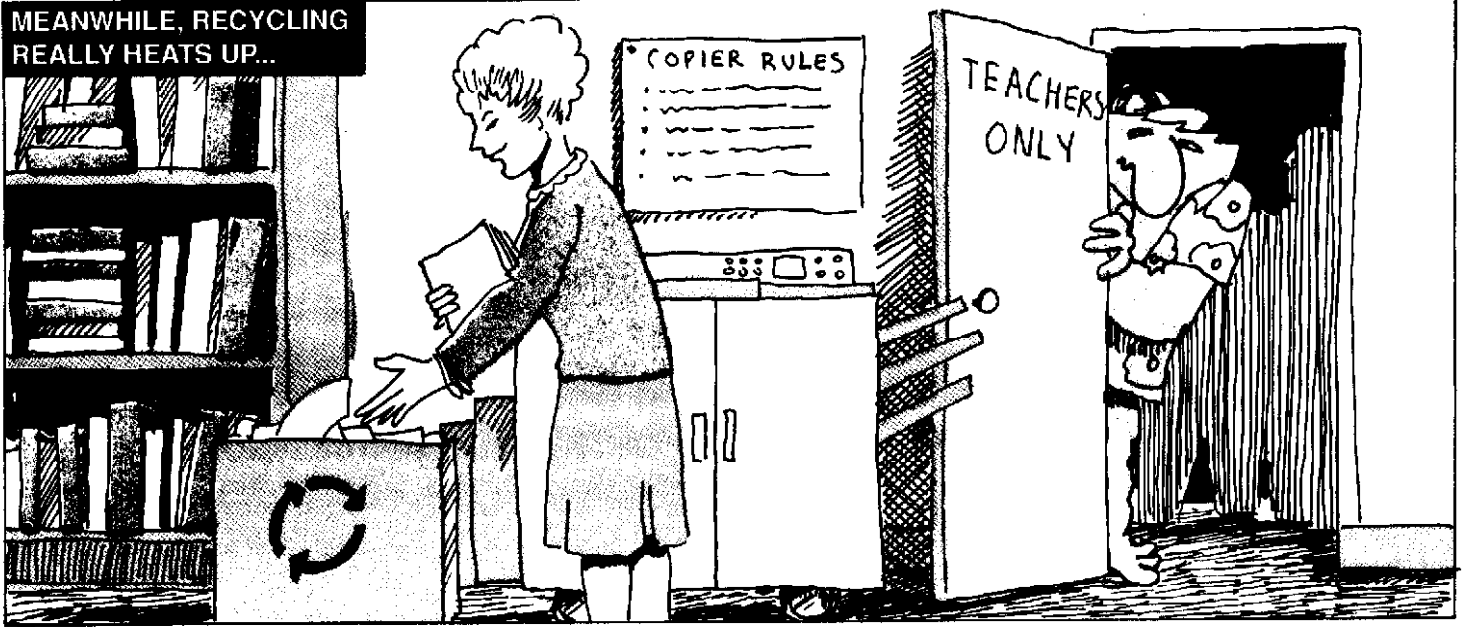


THIS RECYCLING BUSINESS HAS GONE
FAR ENOUGH. THERE'S STILL PLENTY
OF ROOM FOR GARBAGE. WHY WASTE
YOUR TIME!



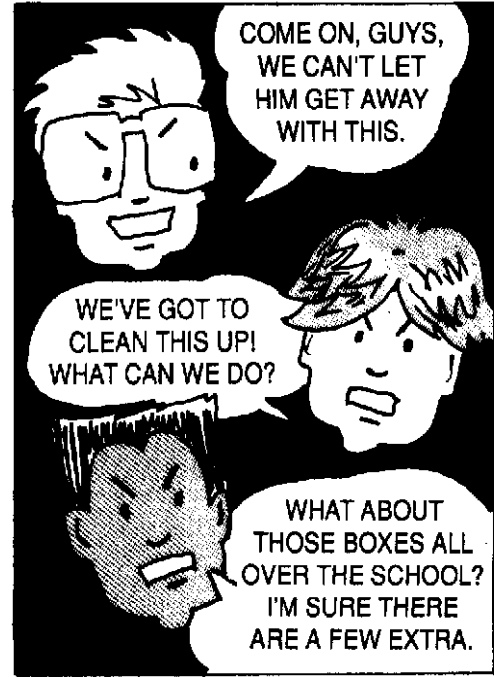


MEANWHILE, RECYCLING
REALLY HEATS UP...





AH, HERE'S MY CHANCE!



SECOND MEETING OF RECYCLING COMMITTEE TODAY!

LAST WEEK DAVID, LEWIS, AND TONY MADE A SPECIAL EFFORT TO CLEAN UP THE FRONT OF THE SCHOOL. AND WE EVEN MADE SOME MONEY FROM ALL THE PAPER THEY COLLECTED. TO THANK THEM FOR THEIR HARD WORK, THE RECYCLING COMMITTEE DECIDED TO HOLD A PIZZA PARTY IN THEIR HONOR.

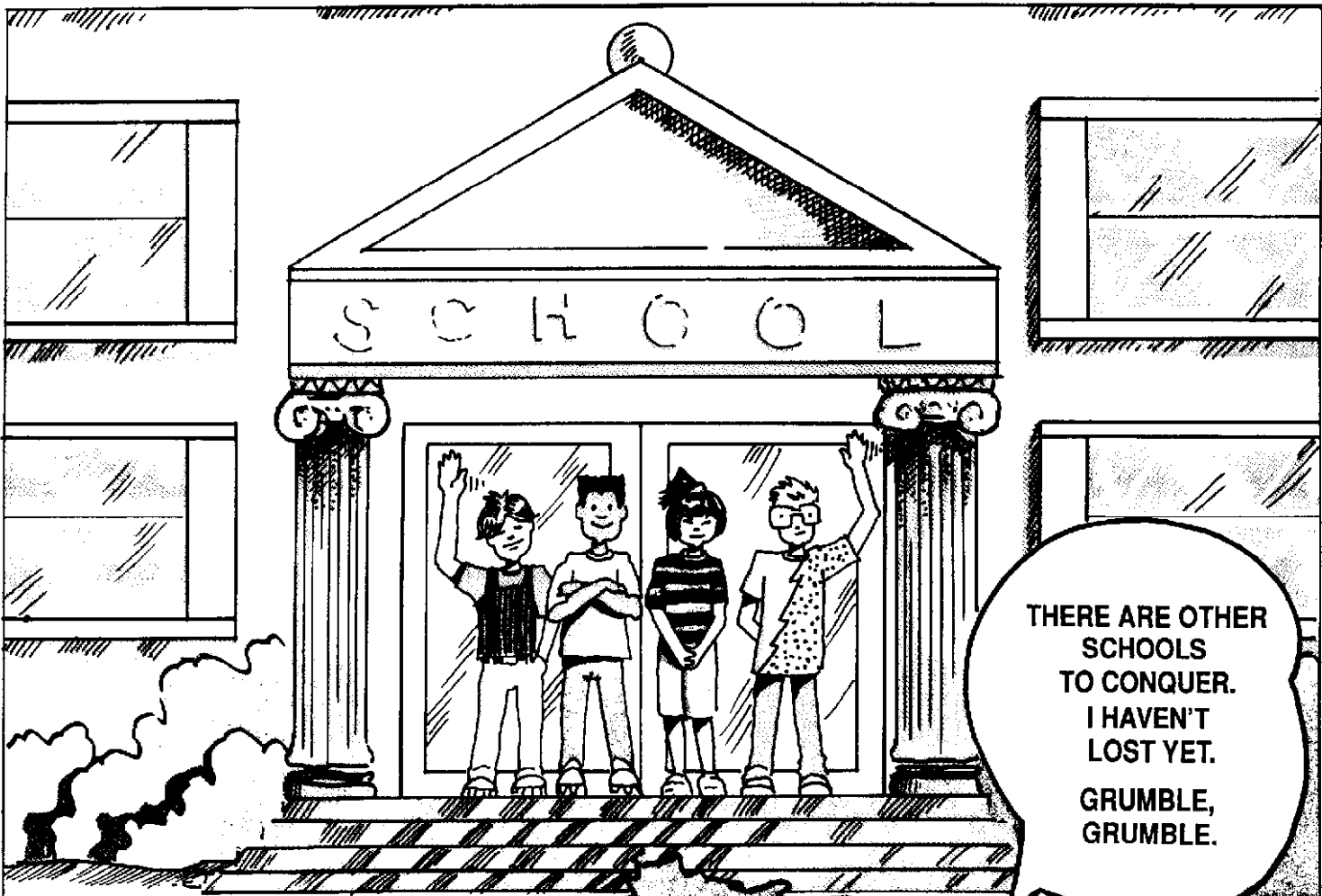
FOILED AGAIN!

I SAW THAT HUGE PILE OF PAPER.

HOW'D YOU EVER PICK IT ALL UP?

YOU GUYS ARE THE GREATEST!

BETSY, HOW WOULD YOU LIKE TO GO TO THAT PIZZA PARTY WITH ME?



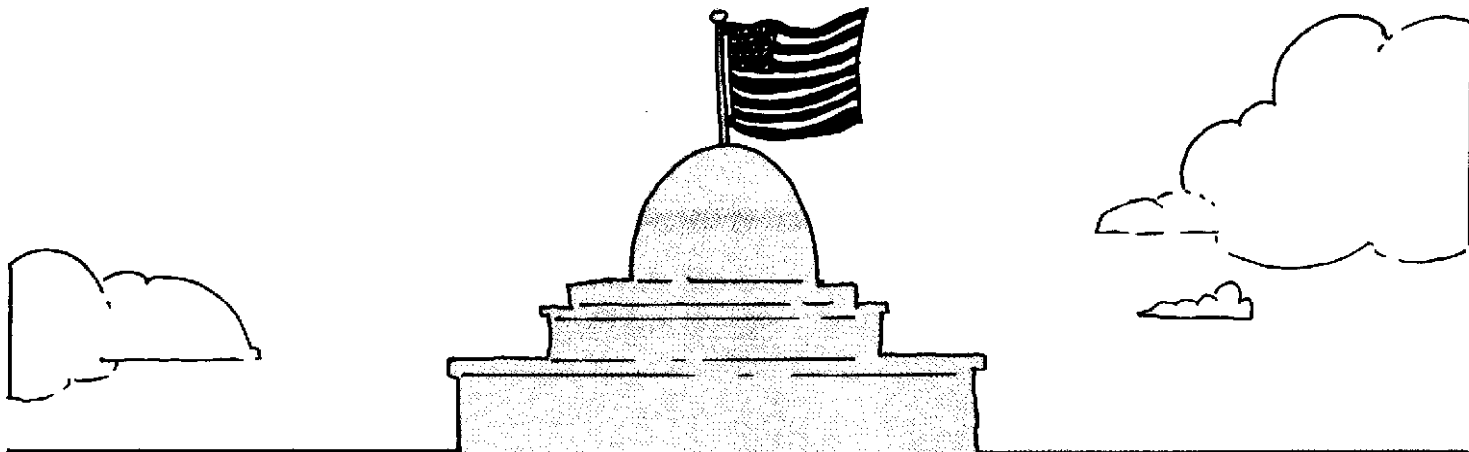
THERE ARE OTHER
SCHOOLS
TO CONQUER.
I HAVEN'T
LOST YET.
GRUMBLE,
GRUMBLE.



Foil the Grumbler. Recycle this comic book. www.fishbase.org

RECYCLE TODAY!

THE GARBAGE GREMLIN COULD BE
HEADED YOUR WAY!



KEEP THE GARBAGE GREMLIN OUT OF YOUR SCHOOL!

- Organize a cleanup day at your school, or of a neighborhood park or playground.
- Reduce the amount of waste you create by using paper on both sides, packing your lunch in reusable containers, and using glasses and dishes instead of disposable cups and plates.
- Hold a 1-day collection at your school of aluminum or bimetal cans, glass bottles, newspaper, plastic soda bottles or milk jugs, or other recyclables.
- Start an ongoing recycling program at your school, like the students of Clean Valley did.



OUTWIT THE GREMLIN



Dumpster Dig

Circle as many objects as you can find in the dumpster. Which of these can be recycled?

N P O P L A S B T G A M
 W E B L A S T D I M O T
 A S W A L U M I N U M O
 S O A S O R T A C R S A
 T D S T P V M S A M A S
 E A H I E A S W N Y V I
 P B U C A A P I C B E T
 A O N J L T I E B E N O
 P T G U D O R Y R F L Y
 E L R G E G R E M L I N
 R T C A R D B O A R D O
 B E I R S T O N G O A L

RETHINK! REUSE! RECYCLE!

What are some things that you often throw away that could be reused or recycled?

- 1 _____
- 2 _____
- 3 _____
- 4 _____

RECYCLING SCRAMBLE

Unscramble and order the steps of the recycling process.

amrekt eurse loltcec
 aerpatsae kernae

1. _____
2. _____
3. _____
4. _____
5. _____

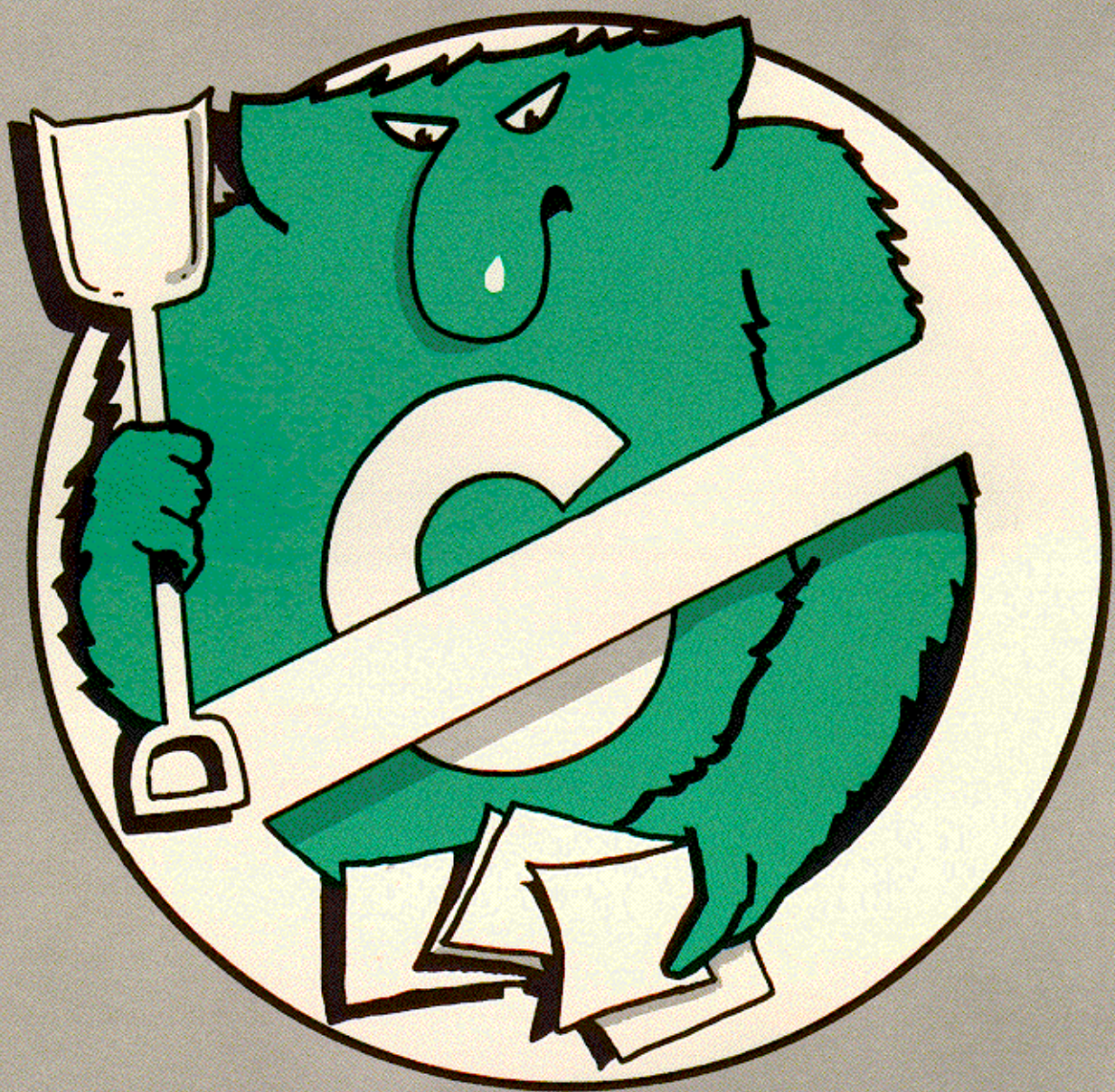


Match each word with its meaning. Write the correct number in the blank.

- | | | |
|--------------------|-------|--|
| 1. Landfill | _____ | A place where paper, cans, bottles, and plastic wastes are collected and separated for recycling |
| 2. Recyclables | _____ | Material made from yard and/or food waste that improves the soil for growing |
| 3. Market | _____ | Waste, such as cans, bottles, and paper, that can be remade into new products |
| 4. Drop-off center | _____ | A place to buy and sell recycled products |
| 5. Compost | _____ | A specially constructed site for disposing of garbage |

PUZZLER

If the Clean Valley school collects 16,400 pounds of paper for recycling, approximately how many trees will be saved?



RECYCLE TODAY!

**HELP STAMP OUT
THE GARBAGE GREMLIN**